



Kingfield News

October 2002

From the Kingfield Neighborhood Association

Kingfield NRP: How much money is left?

Since 1995, when Kingfield jumped on the Neighborhood Revitalization Program (NRP) bandwagon, residents have devised the neighborhood's \$2.9 million spending plan and brought projects to fruition.

Seven years later, a look at the spending reveals which projects are finished, which ones fizzled, and which ones are in progress. Because some of the neighborhood's original plans were impossible or impractical to implement, the neighborhood must reallocate more than \$200,000 before Phase I is completed. The NRP Steering Committee would like residents' help in deciding where to direct the remaining Phase I funds

and setting priorities for Phase II funds that Kingfield will receive in the coming years.

This winter, KFNA will solicit mail, e-mail and in-person comments from neighbors as to which items they want to see continued, what items should be next, and what are their priorities. Come to one of two meetings in January (dates to be announced) when neighbors can discuss the next steps. Starting in November, residents can check for updates at the Kingfield web site www.kingfield.org, or call the KFNA office for meeting dates at (612) 823-5980.

-Heather Martens

KFNA NRP Steering Committee Co-Chair

Here is a summary of the major fund allocations in the Action Plan:

- River-Lake Greenway (formerly known as the 40th Street Greenway); \$320,000
- Staff, office, and other administrative expenses; \$270,000, \$100,000 remaining
- Property redevelopment and affordable housing; \$160,000, \$60,000 remaining
- Community Initiated Grant program; \$60,000, \$15,000 remaining
- Nicollet Avenue lighting, 36th-40th Street; \$300,000 remaining
- Nicollet Avenue lighting/streetscape improvements, 40th-46th Street; \$293,000
- Home improvement matching grants and loans; \$380,000
- Emergency home repair grant program; \$100,000
- Martin Luther King Park improvements; \$185,000
- Hosmer library collections and tech center; \$35,000
- Kingfield News; \$30,000, \$6,000 remaining
- Business façade improvements; \$340,000
- Rental property improvements; \$110,000 remaining
- Social service grants; \$50,000 remaining

In this issue

Kingfield NRP	1
Summer Events	1,3
New Businesses	4
Kindergarten News	4
Election Information	5
Youth Soccer	5
Parks & Trees	6
Halloween	7
35W Meetings	8

Kingfield's First Art Show Premieres

The first Kingfield neighborhood art show, "Artists as Residents/Residents as Artists," occurred August 16 at the Kingfield Ice Cream Social and Cabaret. Exhibit viewers were excited to see the breadth of art produced by people in our neighborhood.

The exhibit was conceived by Rachel Breen and organized by Breen, Scott Anderson, and KFNA NRP Project Organizer Liz Gibson-Gasset. It was open to all Kingfield residents and included 46 pieces produced by 24 artists. Since this was the first event, only two-dimensional art was shown. At future events, organizers hope to include different media and other kinds of art and crafts.



Exhibit visitors voted on their favorite pieces and winners received gift certificates from N.E. Thyme, Shorty and Wags and Westrums. Winners were Scott Anderson, Roberta Avidor and Ted Maltese.

Participants included Scott Anderson, Roberta Avidor, Ken Avidor, Rachel Breen, Sara Church, Hillary DeParde, Patrick Flynn, Patrick Freet, Camille J. Gage, Amy Gracyalny, Jean Greenwood, Rahul Jadhan, Anne Krocak, Ann Luce, Don Luce, Michaelynn McCarron, Marlene Miller, Ilene Krug Mojsilov, Gustav Olson, Tammy Orregon, Mary Rivard, Kathy Quirk Syvertsen, JobyLynn White-Wiedow and Heather Wulfsberg.

To volunteer or display work at next year's event, contact Liz Gibson-Gasset at the KFNA office at (612) 823-5980x3.

-Scott Anderson

About the Kingfield Neighborhood Association

The Kingfield neighborhood runs from 36th to 46th streets between Lyndale Avenue and 35 W.

The Kingfield Neighborhood Association (KFNA) office is located in The Center for Performing Arts building, room 101:

KFNA Office
3754 Pleasant Avenue South
Minneapolis, MN 55409
Phone 612-823-5980
Fax 612-823-6085
E-mail kfna@email.com

The KFNA board meets the second Wednesday of the month at 7 p.m. at ML King Park, 4055 Nicollet Avenue So. The following residents are serving on the **KFNA Board of Directors** for the 2002 term:

Thor Anderson821.1046
Tracine Asberry-Lindquist
Vice President.....824.7542
Tony Aspholm.....827.2956
Secretary
Chris DeParde.....823.1442
Treasurer
Gary Hoover825.0892
Steve Jevning.....822.3515
President
Diane Deerwood
Arthur Knowles823.0808
David Motzenbecker822.5571
Monique Richards.....824.6542
Patty Schulz.....822.3864
Sean Wherley.....825.4952
Jason Zimmerman.....821.0881

KFNA Staff

NRP Coordinator:
Sarah Linnes-Robinson.....823.5980
NRP Project Organizer:
Liz Gibson-Gasset823.5980x3

Kingfield News

If you are interested in writing, editing, designing, or taking photographs for the *Kingfield News*, call the KFNA office at 823-5980.



A Note from the President

There are a lot of fun and exciting things going on in the neighborhood. Here are a few highlights, many of which are discussed in greater detail in this newsletter.

Cabaret & Ice Cream Social

The good news is that a whole bunch of neighbors had a great time listening to music, eating ice cream, making art and viewing incredible paintings by Kingfield residents. The bad news: rain. Thank you to everyone who helped clean up when the rain came. Please think about ideas for next year's event; we will need your help.

38th & Nicollet

Years ago, Quality Coaches completed a beautiful remodeling job of its storefront. More recently, Ace Hardware and Marissa's Bakery greatly improved the appearance of the commercial area. This fall expect to see many more storefront changes. We are thrilled about improving this important gateway into Kingfield. Neighborhood Revitalization Program (NRP) dollars are helping to pay for these and other facade improvements at Kingfield businesses.

River-Lake Greenway

Construction on the Greenway on 40th Street will finally begin this fall after almost seven years of organizing and planning. Expect bump outs with new curbs. Try the bike lanes. Flowers and bushes will be planted next spring to continue the 40th Street tradition of beautiful blooming boulevards.

We Want You

All of these projects have been supported with NRP funding that Kingfield receives from the City of Minneapolis. You can help us determine how to spend unallocated funds in our neighborhood. After the first of the year, KFNA will host meetings to get your ideas. Start compiling ideas now, share them with neighbors in January and after they are approved at the Annual Meeting in April, you can join the KFNA Board or the NRP Steering Committee to help realize your dream project. Call me at (612) 822-3515 to learn more or to volunteer. See how much fun this can be!

-Steve Jevning
KFNA President

Newsletter in Other Formats?

KFNA is exploring the possibility of producing its newsletter in other formats, including in large print, Spanish, or on audio tape or CD. Development and distribution of alternative formats depends on available resources and interest. If you or someone you know is interested in receiving this newsletter in another format, contact the KFNA office at (612) 823-5980.

¿Español?

¿Conoce a alguien, o es que Ud. necesita recibir este periódico en español? Estamos en el acto de evaluar cuantas personas lo querría en español si fuera disponible. Todavía no sabemos si podremos traducirlo por completo, o si lo haremos en una forma parcial.

Nos puede contactar al despacho de la KFNA (la asociación del barrio de Kingfield), o si no habla inglés bien, llame a Monique Richards al (612) 817-6094.

Get Kingfield News instantly!

Sign up for the Kingfield email list, the fastest, most up-to-date source for neighborhood news, crime reports, important announcements. The list is free and will only be used for Kingfield business. It will NEVER be used for commercial or campaign purposes, or ever sold or given to third parties. To join, surf to www.Kingfield.org and look for the subscription button at the top of the page. Or, send an mail with name, email address, real address, and phone number to kfnalist@email.com.

Caba-RAIN? and Ice Cream Social

Menacing skies and a downpour did not deter neighborhood residents from attending Kingfield's 5th Annual Ice Cream Social and Cabaret August 16. The event featured its first art show, which allowed neighborhood residents to display their talents (see related article, page 1).

Interactive art tables, ice cream and other treats, the music of Salsa del Sol and information on neighborhood events enlivened the festivities. Unfortunately, lightening forced an abrupt end to the evening.

Many volunteers gave time and equipment to make the Ice Cream Social and Cabaret successful. Special thanks are extended to the Center for the Performing Arts, Lake Country School, Risen Christ School, and residents of the 3700 block of Pleasant Avenue South. Set-up volunteers included Deanna Campbell, Vicki Carlson, John Hall, Theresa Lien, Avon Miller and Monique Richards.



Ice cream scooping volunteers included Tony Aspholm, Steve Brandt, Chris DeParde, Doug Kress, Natalie Lenz, Jill Nokelby, Sean Wherley and Jason Zimmerman. Food table volunteers included Thor Anderson, Niki Valens and Victor Valens. Art show volunteers included Kristi Anderson, Scott Anderson, Maura Bosch, Rachel Breen, Vicki Carlson, Hilary DeParde, Sandy McDonnell, Gustav Olsen, Monique Richards and Patty Schulz. Emcee was David Motezenbecker. Information table volunteers included Heather Martens, Tracine Asberry-Lindquist, MaryVanderford and Michael Vanderford. Food and drinks were donated by Anodyne, Currans, Never Enough Thyme, Sebastian Joe's, SuperAmerica, and Victor's 1959 Cafe.

-Monique Richards



19th Annual National Night Out

For the last 19 years on the second Tuesday of August, Minneapolis residents have gathered in droves to eat, socialize and "take back the night." In Kingfield, neighborhood residents have gathered around buffet tables to "take in some food." Several blocks in Kingfield hosted parties this year and people are encouraged to begin planning for next year's event.

For assistance with planning a block party or to receive more information, contact the KFNA office at (612) 823-5980.

-Monique Richards



New Business: Fun Sisters Boutique

Discover a new concept in shopping in Kingfield at the Fun Sisters Boutique at 4253 Nicollet Avenue South. Open the second Wednesday through Sunday of every month, Fun Sisters specializes in trendy, inexpensive merchandise like jewelry, purses, hair accessories, scarves, and gift items hand-picked by owner Patty Skiba.

For Skiba, Fun Sisters is both a passion and a second job. She's a flight attendant for Northwest Airlines which allows her during layovers to comb stores for great bargains on merchandise. Stop by the grand opening of Fun Sisters October 9-13 and check out this funky new addition to the neighborhood. Visit the store's website at www.TheFunSisters@msn.com.

-Liz Gibson-Gasset



Fiesta Every Day!

Grocery shopping in Kingfield diversified with the June opening of Supermercado Fiesta at 4408 Nicollet Avenue South. The store's owner, Eneida Medrano, is continuing a family tradition. Her parents owned stores in Mexico City, Mexico while she was growing up.

Medrano is a resident of the Whittier neighborhood where she lives with her parents and two children, Ivan, 17, and Crystal, 7. She chose to locate her business in Kingfield because there is not a store of this type in the immediate area.

The store is a wonderful mix of spices, chorizo, cheeses, milk, eggs, Mexican cookies, paletas (frozen fruit bars), Mexican sodas, tortillas, chips, salsas, party supplies (including piñatas) and basic household necessities.

The store also sells Latin music compact discs, jewelry, cosmetics and airline tickets, in addition to offering a money-wire service. Supermercado Fiesta is open 9 a.m. to 9 p.m. seven days a week.

- Monique Richards

News for Next Year's Kindergartners

Some Kingfield families touring prospective public schools this fall will notice that their options have changed. For residents living between 36th Street and 38th Street, east of Lake Harriet and west of I-35W, their community school changed from Lyndale Community School to "open attendance" area 38. This means that such residents may request Lyndale Community School, Hale Community School, Burroughs Community School, Lake Harriet Community School, Armatage Community School, or one of the magnet programs.

The change arises from efforts during the past two years to create a designated community school for the Kingfield and East Harriet neighborhoods, and to have school attendance boundaries match neighborhood boundaries. The boundary change succeeded. Last year, a task force of district staff and community representatives developed several options for the neighborhood to consider. Residents attending a meeting this spring preferred to move the Barton Open program to make way for a community school. The second preference of residents was to keep the "three-choice guarantee," which was implemented two years ago.

The three-choice guarantee remains in place this fall. Families with kindergartners who submit cards to the school district by January 15 will be guaranteed a slot at one of three schools, provided that only one magnet program is on their list. If Windom Open is one of the choices, families may list two magnet programs.

This fall, the school district plans to resolve Open Area 38 families' desire for a community school. For updates, visit www.egroups.com/group/kingfield-east-harriet-openarea or subscribe by sending a blank e-mail to kingfield-eastharriet-openarea-subscribe@yahoogroups.com.

-Heather Martens

Interest in Conversation Groups?

Bonjour. Buenos Días. Bongiorno.

Is there interest in forming language groups in KF? For those who speak, or who may have studied a second language and don't have many opportunities to speak it anymore, this may be a chance to rekindle those skills.

For those wanting to learn something new, two people could have a knowledge exchange, English for Spanish for example. The two of them could practice new skills and teach each other.

To express interest in joining a group, or participating in an exchange, contact Monique Richards at monique.richards@earthlink.net or at (612) 817-6094.

Group information will be sent out in early November.

-Monique Richards

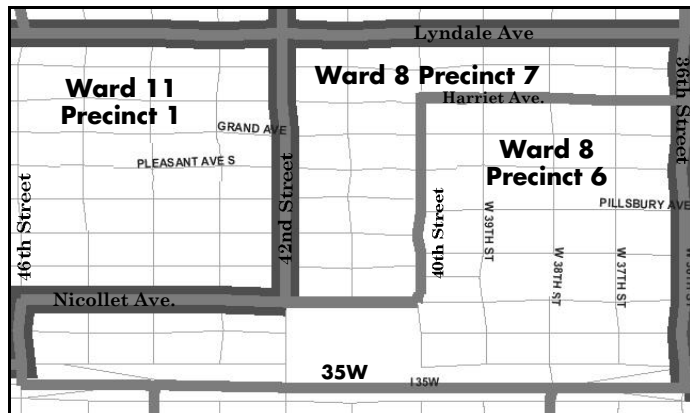
Redistricting Moves Polling Places, District Lines

The redrawing of legislative district lines this year moved many voting sites in Kingfield and placed the entire neighborhood in State Senate District 60. Every ten years legislative district lines are redrawn to account for population changes based on census figures. This change determines the district in which people reside and where they vote. To find your polling place, visit the Minnesota Secretary of State website at www.sos.state.mn.us. To view new ward and precinct boundaries, view the map below.

The general election is Tuesday, November 5. If you are not registered at your current address, you may do so in advance or on Election Day. Proof of identity and residence is required at registration. The following items will suffice for proving identity and residence:

1. Minnesota driver's license or learner's permit, or receipt for either, listing current address.
2. Minnesota identification card, or receipt, listing current address.
3. A utility bill listing name and current address and a payment due date within 30 days of Election Day. The bill may include electric service, gas, water, solid waste, sewer, telephone or cable television.
4. A U.S. passport or military ID card and a utility bill.
5. Students may use a photo ID, registration or fee statement listing current address.
6. Someone registered in the precinct where you live who will vouch for your residence.

-Mary Vanderford



Attend Candidate Forums!

Kingfield neighbors are encouraged to take seriously their role as the “employer” of our elected officials. To help in this cause, two candidate forums and one policy session are planned to give residents an opportunity to interview candidates and learn about their prospective offices before the November 5 election.

General Election Candidates Fair: Candidates in all races, from Minneapolis School Board to U.S. Senate, are invited to participate in this community dialogue and celebration of democracy. No debates, no speeches – this simply is a chance for you to meet the candidates and ask questions about issues important to you. The event is Thursday, October 17 from 7 p.m. to 9 p.m. at Lake Harriet Community School Upper Campus, 50th Street and Washburn Avenue South.

School Board Candidates Forum: School board candidates will be asked prearranged and audience questions about school issues. Meet the candidates and hear what they have to say. The event is Monday, October 28 from 7 p.m. to 9 p.m. at Washburn High Auditorium, 201 W. 49th Street, Main Doors.

Follow the Money! (Budgeting 101): In times of limited public resources, the city's budget and related decisions by the city council are vitally important. Trace your taxes back to city services, and find out how the current mayor and city council plan to improve the budgeting process. The session will be led by Minneapolis City Council Members Barret Lane and Scott Benson on Tuesday, November 12 from 7 p.m. to 8:30 p.m. at Southwest High School.

Youth Soccer

Reflection of Kingfield Cycles

The magic of youth soccer returned to Kingfield this fall on the fields of Martin Luther King Park. Four to 8-year-olds, bedecked in their gold “King Park” jerseys, proudly display their skills each Saturday afternoon for family and friends. High school-aged coaches teach, coax, and console their players.

It is amazing to be in the midst of this experience. As with last summer's soccer program, KFNA sponsored the fall program with King Park. Each Saturday draws 40 to 50 participants in addition to scores of adult observers and fans. It's here where the little kids' soccer program illustrates the cycles of Kingfield. Last summer, I was awed by how similar the soccer program is to an experience 15 years ago when a group of parents strove to create a fun outlet for kids. Then I was trying to figure out schools, trying to find safe places for the kids to play, and trying to learn what opportunities existed at the local park. Now, I see parents with young children coming to this program who are looking for the same thing as I did in 1987.

As I watch the program ripen this fall, it reminded me that our work to turn the neighborhood into a better and more connected place is never finished. The key to keeping Kingfield a vibrant neighborhood is to recognize that efforts like the soccer program are what families seek in a place to call home.

-Michael Vanderford



Greenway Project Commences

Construction on the Kingfield segment of the 40th Street Greenway has begun after more than seven years of planning.

The most noticeable feature of the project is the creation of bump outs—projections of the curb into the parking lane—at eight intersections along 40th Street. These bump outs will be slightly bigger than the length and width of a parked car. They will be landscaped with flowers, ornamental grasses and bulbs to add a splash of color to the intersections and they will provide some protection for cars parked nearby on 40th Street. And by keeping cars from parking on 40th

Street within the legally required setback from corners, they will improve visibility for drivers turning onto 40th from side streets.

Another major feature of the Greenway will be the addition of bike lanes in each direction. These will connect with other neighborhoods to the east and west. The East Harriet Farmstead neighborhood's planning committee recently forwarded suggestions for its segments of the Greenway to its board and several neighborhoods to the east also are planning or ready to plan their segments. If freeway ramps are shifted to 38th Street, the pedestrian-bike

bridge would be rebuilt with a wider span, according to project planners.

The Greenway's construction will mean some disruption and dust in the short term. The goal is to finish the relocation of sewer catch basins, the pouring of curbs for the bump outs, and the backfilling of black dirt and grass seed in November. Planting of the bump outs will follow next spring, and signs will be added to identify the Greenway.

Planning and construction of the Kingfield segment of the Greenway is financed by a portion of the neighborhood's Neighborhood Revitalization Program.

-Steve Brandt

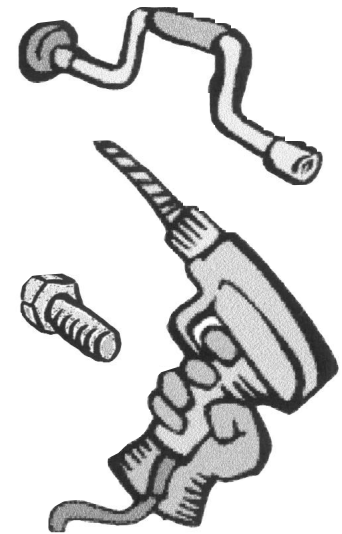
NRP Funds Park Improvements

For many years, Martin Luther King Park users remarked that the multi-purpose room is a dungeon with its poor lighting, acoustics, and ventilation. To rectify these problems, the KFNA Board devoted \$175,000 in the NRP Action Plan. Since fall 2001, Mark Tambornino, an architect living in Kingfield and a member of the NRP Steering Committee, has worked closely with Tom Witck of the Minneapolis Park Board to detail improvements for the space. The work began this summer and is expected to be completed in November 2002.

The project's first step required water-proofing the exterior wall on the south side of the building. Additional changes include improved ventilation with new ductwork and windows that open, more natural light by replacing existing translucent windows with clear ones, improved acoustics with new wall panels that provide sound-proofing and a tackable surface, and re-painting. Because of a competitive construction climate, storage will also be added to the room, and the attached kitchen will be remodeled. Lastly, a new sign will replace the weather-worn one outside the building on Nicollet Avenue.

The Park Board is committing \$50,000 towards the project and NRP is paying for the remainder. "It's going to be fabulous," says Tambornino. "It will certainly be an improved meeting space, which can be used for multiple uses."

-Mary Vanderford



Protect Your Elms During Landscaping and Construction

When driving through Kingfield, residents may have noticed the orange, spray-painted rings that adorn many of the neighborhood's largest trees. These conspicuous markings are an indicator of Dutch elm disease, which returned after ravaging many of the city's largest trees decades ago.

Today, as part of an education effort in Kingfield, the Elm Watch Project offers several suggestions to minimize harm to trees during landscaping and construction. The Elm Watch Project, a recipient of NRP

funding through the Community-Initiated Grant Program, strives to compile an inventory of elms in the neighborhood for evaluation and possible treatment. For information on the project, call the KFNA office at (612) 823-5980.

1. Never cover tree roots with plastic fabric. Such coverings stop the nutrient cycling, increase the accumulation of toxic gas and slowly sterilize the soil.

2. Do not garden at the bases of trees. Edge planting beds with grass rather than slicing roots with spades,

shovels or other gardening equipment. If this is not practical, place plastic edging around roots but allow room for root growth.

3. To prevent soil compaction, have construction materials on pallets delivered with a boom-equipped truck rather than a Bobcat.

4. If machinery and materials must be stored on soil near trees, place thick plywood or metal plates over a temporary 10-foot wide path of shredded bark; this will better distribute weight and minimize soil

Continued on page 8

No "Graveside Manor" this Halloween



Dallas Drake, founder of Graveside Manor Funeral Parlor

For nearly 10 years, Dallas Drake has marked Halloween by transforming his house at 115 West 36th Street into the Graveside Manor Funeral Parlor. During that time, thousands of kids and adults flocked to the site to hear ghostly stories and experience ghostly rituals.

Drake and his partner Joe Shulka have decided, however, to take a break from the tradition this year. It takes a tremendous amount of time and energy to create a successful event and that commitment grew as the event became more popular - drawing 1,500 people one year.

A typical October at Graveside Manor began with the elaborate conversion of the otherwise bright and cheery house exterior into a gloomy, gothic structure. The effect was complete with two mammoth pillars, perched on one side with a realistic skeleton. The week before Halloween children were invited for a story telling session in which they were invited to participate. In years past, kids have acted as pallbearers in a mock funeral. Halloween evening involves trick or treating and frightful interaction with the homeowners, who wear black trench coats and hats.

Despite this year's break, Drake says that he looks forward to reviving the concept in the future.

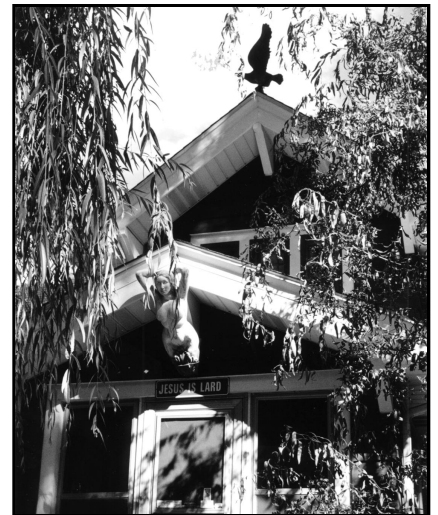
-Thor Anderson

Kingfield's "Most Haunted" House

While M.D. Michaelson's mother died nearly 20 years ago, he believes that her spirit, in the form of a poltergeist, shares his home at 4035 Blaisdell Avenue South. The first signs of the mischievous spirit included pictures falling off walls, objects falling over and breaking, and lights turning on. Michaelson says, more pronounced manifestations include the appearance of energy "heat waves" which cause broomsticks and other rigid items to bend and undulate. On rare occasions the spirit takes the form of a floating orb of light, he says.

Over the years Michaelson has learned to communicate with the spirit by using a "ju-ju stick." In this case, the ju-ju stick is a regular yard stick which is placed upright in the bathtub, leaning against the soap dish. Under the appropriate circumstances the spirit will respond to questions by moving the stick to the left to answer "yes" or to the right to answer "no."

To dismiss skeptics, Michaelson points out that his house has been the subject of numerous accounts in books and newspapers, including the Star Tribune and the Southwest Journal. He claims that many neighbors have witnessed the spirit's antics and he invites continued scrutiny of the phenomena.



-Thor Anderson

Celebrate Halloween at King Park

People who enjoy helping children and participating in the revelry of Halloween are encouraged to volunteer at Martin Luther King Park's Halloween Party, October 31 from 6 p.m. to 8 p.m.

Every year, King Park staff, Youth-line members and community volunteers provide games for young children and a haunted house for children ages 10 and older. Ten volunteers are needed to assist with "ghosts and goblins" games. The teenagers in the Youth-line program will set up and operate the haunted house. Please call Mary Vanderford at (612) 827-3014 to volunteer.

- Mary Vanderford

Tennis Returns to MLK Park

After years of decay and abandonment, Martin Luther King Park is finally getting its tennis courts back. Although the new courts will not be completed until spring 2003, the time is near to dust off that Donay, polish that Prince and whack that Wilson.

Over the years, the park's two tennis courts rarely saw any serves, volleys, or winners. In fact, for the last couple of years, the courts' only action was that of dogs scampering across the crack-marred surface. Of course, there's nothing better than a fenced-in play area. Well, move over Rover because Martin Luther King Park is getting two new courts.

-Jon Provenzano

Public Meetings on 35W Project in November

After several comment sessions, more public meetings are scheduled to discuss the proposed ramp changes to Interstate 35W near Kingfield.

In November, an open house will be held for neighborhood residents to view models, drawings, and traffic figures related to the project. A date has not been set for the meeting but it will be announced via the Kingfield neighborhood e-mail list. The meeting will be led by project organizers and the public is invited to share its comments and concerns. To join the e-mail list, see page 2.

Among other things, the proposed project would construct two new ramps at Lake Street and move the existing ramps at 35th and 36th Streets to 38th Street. While Kingfield residents are concerned about the effects of relocated traffic to 38th Street, other measures are being considered which would have an equally significant impact on the area. These proposals, which could coincide with the ramp construction and relocation, include opening Nicollet Avenue at Lake Street and changing existing one-way streets in Kingfield to two-way traffic. These streets include Blaisdell Avenue, First Avenue, 35th Street and 36th Street.

Input is particularly being sought regarding sound walls and whether the existing wooden structures should be replaced with shorter and more decorative walls. Other measures requiring input include parking restrictions along adjoining streets and pedestrian safety at the proposed 38th Street ramp.

Almost 70 people attended two public comment and review sessions in August at Martin Luther King Park. The public is invited to contact Jeanne Massey with questions or comments regarding the project. Massey is the Kingfield representative to the project's advisory committee and may be reached at (612) 823-2859 or jmassey@tcq.net.

-Sean Wherley

Protect Your Elms

continued from page 6

compaction. Thin plywood fails to distribute the weight of thousands of pounds of machinery and materials.

5. Consult ISA-certified (International Society of Arboriculture) arborists before construction to prevent soil compaction. Once soil is compacted, even an arborist can do very little. Ensure that tree preservation is in the construction contract.

6. If compacted soil exists, it can be replaced but not loosened. Around trees, use a tool called a pneumatic air knife, which 'blows' the soil away from roots. Then cover the roots with new, healthy soil.

7. When constructing or replacing sidewalks, use "mudjacking" or rubber sidewalks rather than removing large tree roots. Also consider building decks with footings, which are less damaging to trees, than patios that require excavation and compacted gravel.

-Kally Goschke

086-12-823-5980

Kingfield Neighborhood Association
3754 Pleasant Avenue South
Minneapolis, Minnesota 55409



Nonprofit
Organization
U.S. Postage
PAID
Mpls., MN
Permit # 3362