

South Nicollet Pollinator Pathway Project (P3); Creating a Pollinator Habitat in your Yard



Why the Rusty-patched Bumble Bee?



- Plant diversity and pollinators provide essential roles with food systems, sustaining ecological systems and meeting goals for soil and water conservation.
- Since 2017, the rusty-patched bumble bee (*Bombus affinis*) has been listed as endangered under the U.S. Endangered Species Act.
- The once common species now occupies 0.1% of its historical range
- With the increase of urbanization and agricultural intensification, there are fewer food resources and nesting sites for bees. Monocultures of turf in cities and monocultures in rural areas can be food deserts to pollinators.
- Source: Rusty Patch Bee Fact Sheet, Dr. Elaine Evans, Bee Lab, University of Minnesota

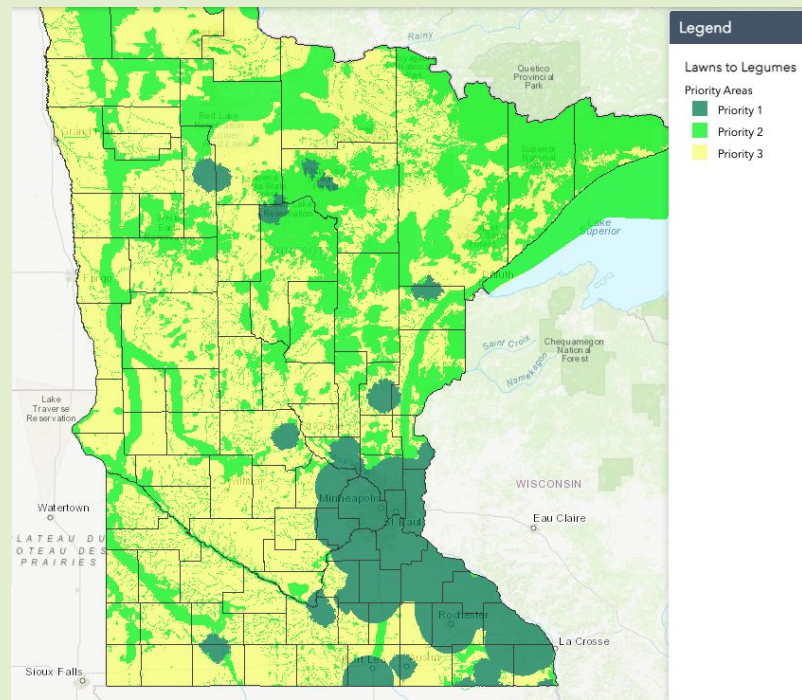


Lawn to Legumes Demonstration



Neighborhood Grant

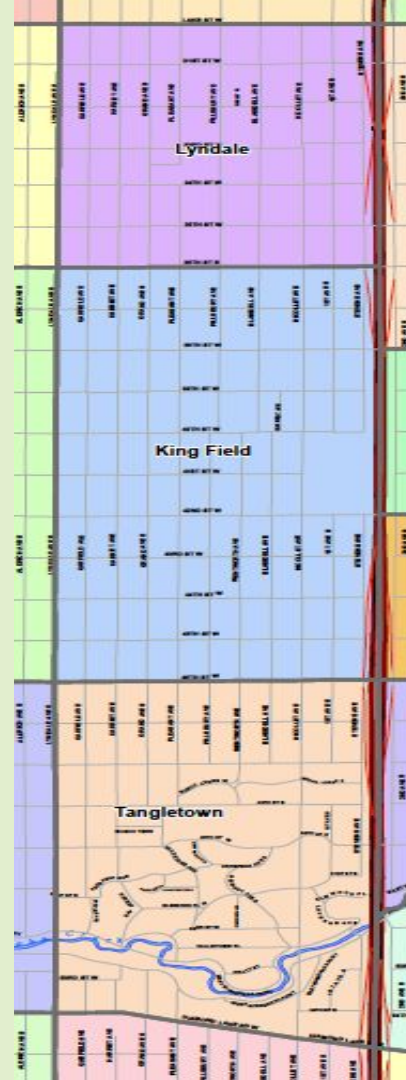
- Twin Cities is a priority area for protecting the Rusty Patch Bee due to lack of sufficient habitat
- Tangletown, Kingfield, and Lyndale neighborhoods developed a partnership to represent a strong pathway from Minnehaha Creek along Nicollet Avenue
- Received \$40,000 grant from State Board of Water and Soil Resources to implement pollinator habitat through the [Legislative-Citizen Commission on Minnesota Resources and the Environment and Natural Resources Trust Fund](#) (LCCMR| ENTRF)



Our neighborhoods

The Nicollet Pollinator Pathway runs from Diamond Lake Road at the South to Lake Street in the North and from Lyndale Avenue to the west and 35W to the east.

Our proposal was to establish a number of community sites across the neighborhoods and then identify residential sites that would be within the bee foraging area from the larger community sites.



Our Project Philosophy



- a. distribute sites along the corridor;
- b. spread sites evenly among all three neighborhoods while clustering them closer to community sites and in areas that have fewer gardens and more pavement;
- c. remove barriers for beginning gardeners (including paying up front and choice of plants, and providing education, like tonight!);
- d. provide support and build connections between neighbors throughout the project;
- e. involve as many neighbors as possible.

This is a true community (as in communal) project: those with knowledge and time can share that with others, those with financial means can share that to help grow the program and sites.



Pollinator program popular, but many don't follow through on planting plans

Dan Gunderson Moorhead, Minn. September 27, 2022 4:00 AM



<https://www.mprnews.org/story/2022/09/27/pollinator-program-popular-but-many-dont-follow-through-on-planting-plans>

Our Community Sites

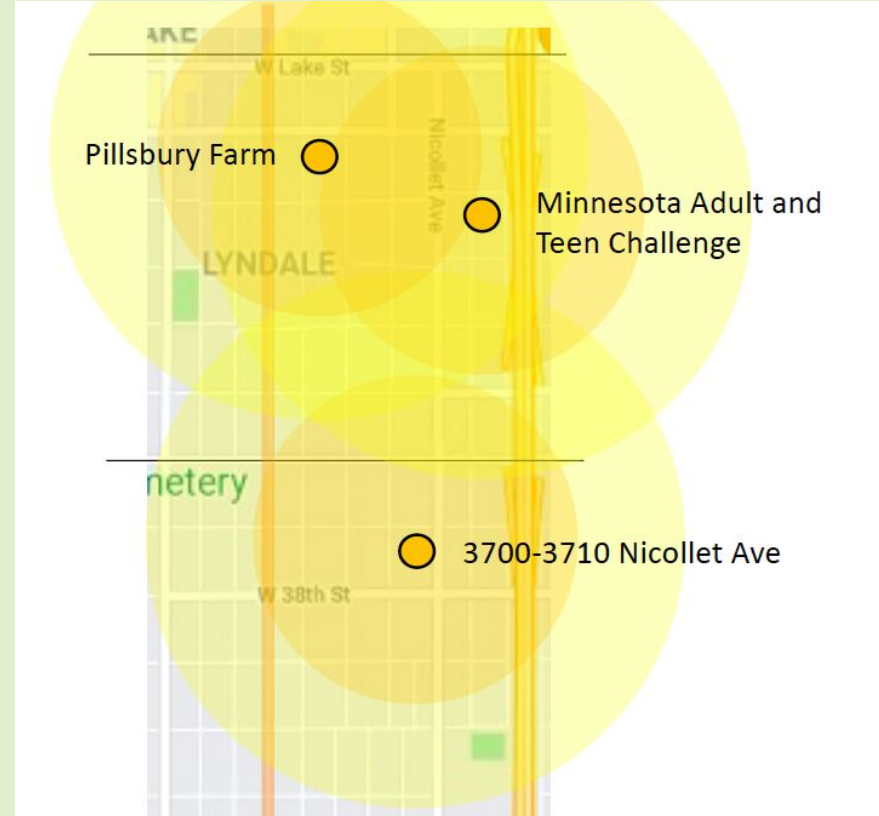
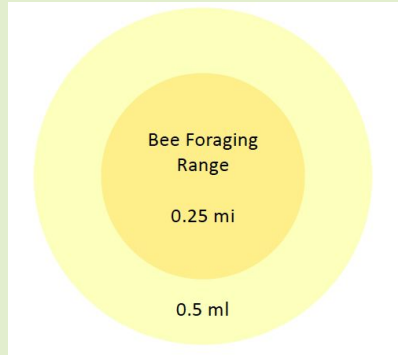


The planning team evaluated community site locations and established 5 sites for the project.

This map shows the first three community sites:

- Pillsbury Farm
- Minnesota Adult and Teen Challenge
- 3700-3710 Nicollet Ave

The yellow circles show the foraging range where we targeted residential sites within that range to complement the community sites.



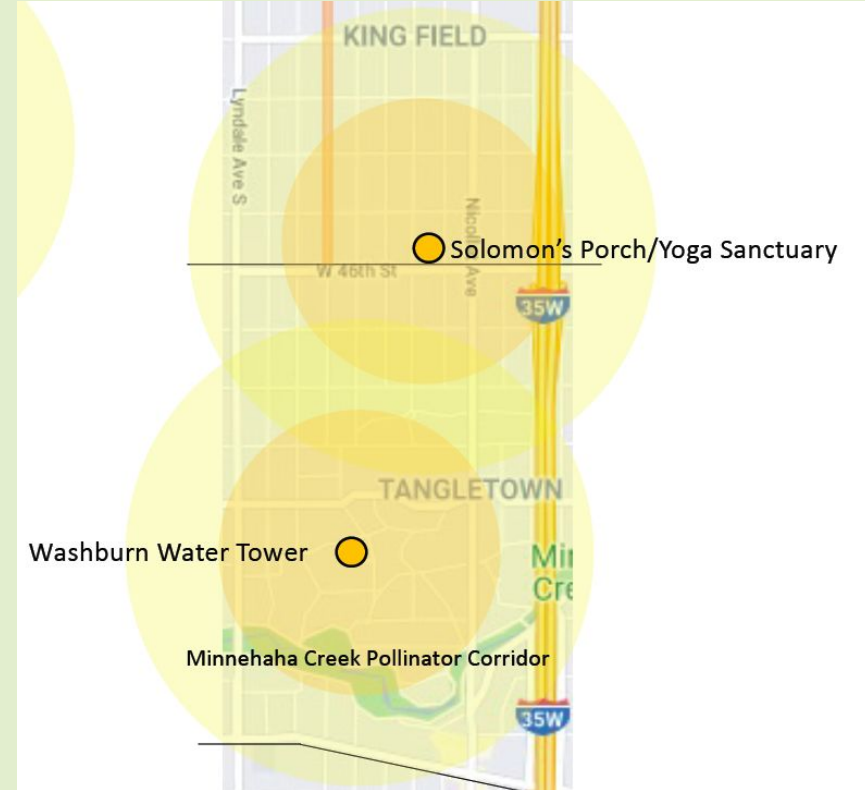
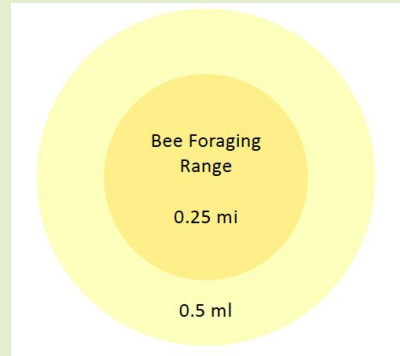
Our Community Sites



This map shows the final two community sites:

- Solomon's Porch/Yoga Sanctuary
- Washburn Water Tower

We are working closely with Master Gardeners for their expertise and to ensure we can provide education to all our residents, not just those selected for the project.



Our Goals



1. Increase pollinators
2. Build community connections between neighbors



Community Partner: Pillsbury Farm



Volunteer Site Lead:
Scott Merth

Master Gardener:
Lee Watkins



Community Partner:

MN Adult and Teen Challenge



Volunteer Site Lead:
Patrick Draddy

Master Gardener:
Christina Watts



Community Partner: Beacon Interfaith Housing



Volunteer Site Lead:
Dan Swenson-Klatt

Master Gardener:
Lee Watkins

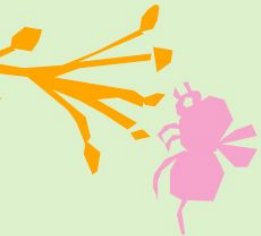


Community Partner: Solomon's Porch / Yoga Sanctuary



Volunteer Site Lead:
Tracy Vacura

Master Gardener:
Randy Rau



Community Partner: Washburn Water Tower



Volunteer Site Lead:
Kate Ladner

Master Gardener:
Ieva Saulite Gorrilla



Thank you to our neighborhood volunteers!



Each neighborhood has multiple volunteers working to make this project a reality.

- Tangletown: Mary Jane, Heather, Kate
- Lyndale: Holy, Lisa, Shannon
- Kingfield: Marianne, Laura, Erin, Kait, Kristi, Sara

And the many Master Gardener volunteers who are assisting both in tonight's presentation and in the planning and execution of the project!

- Lee, Margo, Randy, Jen, Mary, Ieva, Christina, Julie



Thank you for your participation fees and generous donations!



In addition to the funding from the MN Board of Soil and Resources, project participation fees and donations will allow us to increase our residential garden sites from 36 participants to 45!

Every \$350 we receive in donations allows us to add an additional residential garden site to our pollinator pathway. If you would like to donate to the Nicollet Avenue Pollinator Pathway project, you can do so via cash, Venmo, or PayPal.

Venmo: @kingfield_kfna

PayPal: Kingfield Neighborhood Association

<https://bit.ly/3dKRSDH>



Next steps:



- We will send out follow ups on how to start preparing your site
- Selected sites will receive a template, but can modify the design however they like as long as they use the selected plants given
- Spring event
- Plant Sale
- Plant distribution and planting late May/early June



Plant templates:



Rusty Patched Bumble Bee Plant Template Sunny Garden

5 x 7 planting area in 6 or more hours of sun on boulevard

Mountain Mint	Wild Strawberry	Wild Bergamot	Wild Bergamot	Wild Strawberry	Self Heal
Anise Hyssops	Mountain Mint	Mountain Mint	Wild Bergamot	Wild Strawberry	Self Heal
Anise Hyssops	Anise Hyssops	Wild Strawberry	New England Aster	New England Aster	Self Heal
Wild Strawberry	Purple Prairie Clover	Purple Prairie Clover	Wild Strawberry	New England Aster	Wild Strawberry
Purple Prairie Clover	Purple Prairie Clover	Self Heal	Self Heal	Wild Geranium	Wild Strawberry
Wild Geranium	Wild Geranium	Wild Geranium	Wild Geranium	Wild Geranium	Wild Geranium

Front of Garden



Plant templates:



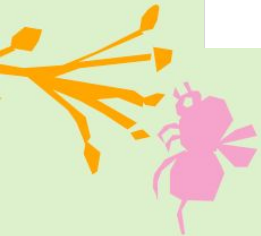
Rusty Patched Bumble Bee Plant Template

Partial Shade Garden

5 x 7 planting area in 4 -6 hours of sun

Culver's Root	Culver's Root	Culver's Root	Culver's Root	Culver's Root	
White Turtlehead	Woodland Phlox	Woodland Phlox	Woodland Phlox	White Turtlehead	
White Turtlehead	Self Heal	Self Heal	Self Heal	White Turtlehead	
White Turtlehead	Rue Anemone	Rue Anemone	Rue Anemone	White Turtlehead	
Wild Strawberry	Bottle Gentian	Bottle Gentian	Bottle Gentian	Wild Strawberry	
Wild Strawberry	Virginia BlueBells	Virginia BlueBells	Virginia BlueBells	Wild Strawberry	
Wild Strawberry	Mountain Mint	Mountain Mint	Mountain Mint	Wild Strawberry	

Front of Garden



Plant templates:



Rusty Patched Bumble Bee Plant Template

Partial Shade Boulevard or less than 3' in height

6 x 6 planting area in 4 - 6 hours of sun

Wild Strawberry	Wild Strawberry	Wild Strawberry	Wild Strawberry	Wild Strawberry	Wild Strawberry
Woodland Phlox	Canadian Anemone	Canadian Anemone	Turtlehead	Wild Geranium	Self Heal
Woodland Phlox	Canadian Anemone	Turtlehead	Azure Aster	Wild Geranium	Woodland Phlox
Self Heal	Canadian Anemone	Azure Aster	Wild Geranium	Self Heal	Self Heal
Woodland Phlox	Azure Aster	Turtlehead	Wild Geranium	Turtlehead	Woodland Phlox
Self Heal	Wild Strawberry	Wild Strawberry	Wild Strawberry	Wild Strawberry	Woodland Phlox

3 x 12 planting area in 4 - 6 hours of sun

Wild Strawberry	Wild Strawberry	Woodland Phlox	Woodland Phlox	Woodland Phlox	Wild Strawberry	Wild Strawberry	Canadian Anemone	Canadian Anemone	Wild Geranium	Wild Geranium	Wild Strawberry
Self Heal	Self Heal	Turtlehead	Azure Aster	Turtlehead	Azure Aster	Turtlehead	Azure Aster	Turtlehead	Azure Aster	Self Heal	Self Heal
Wild Strawberry	Wild Geranium	Wild Geranium	Canadian Anemone	Canadian Anemone	Wild Strawberry	Wild Strawberry	Woodland Phlox	Woodland Phlox	Woodland Phlox	Wild Strawberry	Wild Strawberry



DALE • KINGFIELD • TANGLETOWN

Plant templates:



Rusty Patched Bumble Bee Plant Template

Sunny Garden on Boulevard or short height

6 x6 planting area in 6 hours of sun

Prairie Onion	Blanket Flower	Canadian Anemone	Canadian Anemone	Narrowleaf Coneflower	Self Heal
Blanket Flower	Prairie Onion	Prairie Onion	NarrowLeaf Coneflower	Canadian Anemone	Wild Geranium
Wild Strawberry	Prairie Onion	NarrowLeaf Coneflower	White Turtlehead	Wild Geranium	Self Heal
Blanket Flower	NarrowLeaf Coneflower	White Turtlehead	Azure Aster	Prairie Purple Clover	Wild Geranium
Wild Strawberry	White Turtlehead	Azure Aster	Prairie Purple Clover	Azure Aster	Wild Geranium
Blanket Flower	Wild Strawberry	Prairie Purple Clover	Wild Strawberry	Prairie Purple Clover	Wild Strawberry

3 x 12 planting area in 4 - 6 hours of sun

Wild Strawberry	NarrowLeaf Coneflower	NarrowLeaf Coneflower	Wild Geranium	Blanket Flower	Prairie Purple Clover	Prairie Purple Clover	Blanket Flower	Wild Geranium	Prairie Onion	Wild Strawberry	Canadian Anemone
Canadian Anemone	Prairie Onion	Azure Aster	Self Heal	White Turtlehead	Azure Aster	White Turtlehead	White Turtlehead	Self Heal	Azure Aster	Prairie Onion	Wild Strawberry
Wild Strawberry	Canadian Anemone	Prairie Onion	Blanket Flower	Wild Geranium	Prairie Purple Clover	Prairie Purple Clover	Wild Geranium	Blanket Flower	NarrowLeaf Coneflower	NarrowLeaf Coneflower	Wild Strawberry

Front of Garden



FIELD • TANGLETOWN